

BATH AND NORTH EAST SOMERSET

ECONOMIC AND COMMUNITY DEVELOPMENT POLICY DEVELOPMENT AND SCRUTINY PANEL

Thursday, 17th November, 2011

Present:- Councillors Robin Moss (Chair), Ben Stevens (Vice-Chair), Patrick Anketell-Jones, Brian Simmons, Michael Evans, Lisa Brett and Manda Rigby

23 WELCOME AND INTRODUCTIONS

The Chairman welcomed everyone to the meeting.

24 EMERGENCY EVACUATION PROCEDURE

The Chairman drew attention to the emergency evacuation procedure.

25 APOLOGIES FOR ABSENCE AND SUBSTITUTIONS

There were none.

26 DECLARATIONS OF INTEREST UNDER THE LOCAL GOVERNMENT ACT 1972

There were none.

27 TO ANNOUNCE ANY URGENT BUSINESS AGREED BY THE CHAIRMAN

There was none.

28 ITEMS FROM THE PUBLIC OR COUNCILLORS - TO RECEIVE DEPUTATIONS, STATEMENTS, PETITIONS OR QUESTIONS RELATING TO THE BUSINESS OF THIS MEETING

There were none.

29 MINUTES 05/10/2011

The Panel confirmed the minutes of the previous meeting as a true record and they were duly signed by the Chairman.

30 MEDIUM TERM SERVICE & RESOURCE PLANS APPROVAL PROCESS (5 MINUTES)

The Chairman informed the panel about the agreed Medium Term Service & Resource Plans approval process and explained that Members of the Panel are

invited to make their comments to the following Policy development and Scrutiny Panels:

- Housing and Major Projects PDS Panel meeting (held on 15th November)
- Resources PDS Panel meeting on 21st November (starts at 5.30pm in Keynsham Town Hall) and
- Planning, Transport and Environment PDS Panel meeting on 6th December (starts at 2pm in Council Chamber) – Tourism, Leisure and Culture and World Heritage Management.

The Panel **NOTED** the approval process.

31 COMMUNITY SAFETY PLAN: WATER SAFETY (30 MINUTES)

The Chairman invited Dennis McCann (Unitary Manager for Bath & North East Somerset Avon Fire & Rescue Service) and Cathryn Humphries (Neighbourhood Environment Manager) to introduce the report and give a presentation on this matter.

Dennis McCann took the Panel through the report by highlighting that the number of the incidents in the first 9 months of this year had been reduced by half in comparison with the same period last year. Dennis McCann also pointed out that the education and training on water safety awareness is on rise and that the commerce across the region showed their support and supported the publicity of water safety awareness.

Cathryn Humphries gave a presentation (attached as appendix to these minutes) where she highlighted the following:

- Why did the Council commission the work from RoSPA (Royal Society for the Prevention of Accidents)?
- Who did RoSPA consult with?
- Main findings (Low risk, tolerable risk and high risk level spots)
- Main recommendations (short and long term)
- Next steps

The Panel asked the following questions and highlighted the following points:

Members of the Panel queried how long it would take for bar or fence to be put up along the high risk level parts of the river.

Cathryn Humphries replied that this had been put forward to the Environmental Agency and that hopefully the resolution would be soon available.

The Panel also asked if there was communication with Sainsbury about the high risk level part of the river and their contribution towards water safety.

Cathryn Humphries replied that this had been raised with the Economic Development and it might be part of the Section 106 agreement.

The Panel asked if lightning along river bank had been considered.

Cathryn Humphries replied that RoSPA also recommended lightning along the river bank. Once the fence, or bar, along the high risk level sport is approved the lighting will be as well.

The Panel welcome the report and congratulated everyone on reducing the number of incidents related to water safety. The Panel was also impressed with the prevention activities and education about the subject.

It was **RESOLVED** to note the report and presentation.

Water Safety presentation

32 ANALYSIS OF FUNDING FOR THIRD SECTOR IN BATH AND NORTH EAST SOMERSET IN 2010-11: UPDATE AND PROGRESS REPORT (25 MINUTES)

Councillor Brian Simons informed the meeting that he is the Chairman of the Keynsham Dial-A-Ride and that he will remain at the meeting during the discussion on this item.

The Chairman invited Andy Thomas (Group Manager for Partnership Delivery) to give a presentation on this subject.

Andy Thomas gave a presentation where he highlighted the following points:

- Overview of Council funding
- Range of Payments
- Third Sector Review
- Total Income (data from Develop ECS survey)
- Spread of payments to organisations
- Issues identified so far
- Next Steps
- The Council's Approach
- Changing Context
- Medium Term Service and Resource Plans
- The Change Programme

A full copy of the presentation is available on the minute book in Democratic Services.

The Panel asked the following questions and made the following points:

The Panel asked how the Council identify who gets funding from national funding opportunities.

Andy Thomas replied that there is a small grants pot that has criteria on identifying the projects that might be sustainable. Andy Thomas mentioned the 'pump priming' money allocated to the scheme in Chew Valley.

Paula Cannings (from Develop Enhancing Community Support) added that 3rd sector organisations may never receive funds directly from the Council as they depend on organisations and charities such as Develop ECS which is a local development agency providing support for the voluntary and community sector in Bath and North East Somerset.

Andy Thomas also said that the Council would encourage collaborative work between groups and agencies in order to promote partnership work between them.

It was **RESOLVED** to:

1. Note the update and presentation
2. Request from officer/s to circulate updated chart and data as soon as possible, preferably before the next Panel meeting in January 2012; and
3. Receive an update at the next panel meeting in January 2012.

33 FUNDING SEARCH AND EU FUNDING RESOURCES (20 MINUTES)

The Chairman invited Andy Thomas (Group Manager for Partnership Delivery) to give a presentation on this subject.

Andy Thomas gave a presentation where he highlighted the following points:

- External Funding key issues
- Value of External Funding to B&NES
- Keeping up to date with funding opportunities
- EU Funding
- Support for EU funding
- Looking ahead

A full copy of the presentation is available on the minute book in Democratic Services.

The Panel asked the following questions and made the following points:

The Panel commented that a lot of funding targeted deprived areas in the past and asked why that is not happening anymore.

Andy Thomas replied that the current Government had reduced the amount of ring-fenced grants across the country, including funding targeted for this purpose.

Councillor David Bellotti (Cabinet Member for Resources) said that EU Funding sits within his portfolio. The earliest year that Council could get some EU funding is 2014. The Council should consider accessing those funds in partnership with other Local Authorities from South West. Councillor Bellotti suggested that the Panel should invite David Fletcher (The South West European Partnership Executive Director) who would provide more information about EU Funding.

It was **RESOLVED** to note the report and presentation and to note the suggestion from Councillor David Bellotti about inviting David Fletcher (The South West European Partnership Executive Director) in near future.

34 SCRUTINY INQUIRY DAY: THE BENEFIT OF JOINT WORKING TO RETAIN GRADUATES IN BATH & NORTH EAST SOMERSET (5 MINUTES)

The Chairman invited Donna Vercoe (Acting Policy Development and Scrutiny Manager) to introduce the report.

The Panel **RESOLVED** to:

- Note the Draft Terms of Reference and agreed to have a joint Scrutiny Inquiry Day investigation
- Nominate Councillors Robin Moss and Ben Stevens as the key contacts for the Co-ordination of the Single Day Inquiry.

35 PRESENTATION ON SUSTAINABLE ECONOMIC GROWTH INCLUDING AN UPDATE ON LEP ENTERPRISE ZONES AND AREAS (45 MINUTES)

The Chairman invited John Wilkinson (Economic Enterprise and Business Development Manager) to give a presentation (attached as Appendix to these minutes).

John Wilkinson gave a presentation where he highlighted the following points:

- Economic Strategy for Bath & North East Somerset 2010-2026 - Launched in 2010 by Sustainable Growth Alliance. 2 update papers since then, including Nov 2011 at Cabinet. Overall aim is to improve the prosperity and wellbeing of Bath and North East Somerset residents through a more productive, competitive and expanded economy by 2026.
- Economic Strategy Progress - contains series of actions and milestones.
- Core economic indicators - In the past 10 years productivity, measured by GVA increased from £36,400 in 2001 to £43,400 in 2011 (3rd out of 15 South West LAs). Over the same time 3,000 jobs were created ranking the area below the national and South West averages.
- Emerging economic challenges: % of 18-24 year olds claiming JSA as proportion of total WAP - Gone from bottom to top in last year. 33% of all JSA claimants are 18-24 years old. Figures out yesterday 765 down from 815 in Sept (3% of all claimants, compared with 8% GB).
- National policy changes - Enterprise Zone in Bristol 70 hectares, 17,000 jobs, 240,000m² new or refurbished offices, with these offers:
 - Retain business rates from April 2012 (new and growing businesses)
 - Business rate discount worth up to £275k over a 5 yr period
 - Local Development Order
 - Superfast broadband
- B&NES importance in SW region
- Potential for recovery: Employment West of England LEP, 1991 – 2020 - According to Oxford Economics, the West of England economy as a whole is

projected to 'recover' by 2013, compared with LEP's in core cities by 2015 and core cities generally by 2015/17.

- Bath City Riverside 'City of Ideas' Enterprise Area - Collection of development sites in central Bath along Upper and Lower Bristol Roads. East: largely office-based development - creative, computer-related, financial and business services; engineering consultancies. Central Area: Housing, leisure. West of the Area: Mix of employment ranging from light industrial to office.
- New actions

The Panel asked the following questions and made the following points:

The Panel asked about the breakdown per area on time people that people were unemployed.

John Wilkinson said that he will provide that information to the Panel.

Councillor Cherry Beath (Cabinet Member for Sustainable Development) suggested that the Panel should invite Jeremy Smalley (Divisional Director for Skills and Employability) to talk about Job Seekers Allowance and unemployed young people. The Panel welcomed this suggestion.

John Wilkinson informed the Panel that current status of unemployment does not include any MoD redundancies as the relocation is yet to be implemented and its impact is still to be fully understood.

John Wilkinson also said that Bath has strong creative sector and also strong professional business sector. Combination of those is a recipe for a success future.

It was **RESOLVED** to note the presentation.

Sustainable Economic Growth presentation

36 WORKPLAN

It was **RESOLVED** to note the workplan with the following additions and amendments:

- Further update/details on funding for Third Sector in Bath and North East Somerset (January 2012)
- Impact of Olympic Games on Bath and North East Somerset and how Olympic Games are promoted here (January or March 2012)
- Business West Evaluation report (move from January to March 2012).

The meeting ended at 3.40 pm

Chair(person)

Date Confirmed and Signed

Prepared by Democratic Services

This page is intentionally left blank

River Safety Report



Cathryn Humphries,
Neighbourhood Environment Manager
B&NES Council

Making Bath & North East Somerset an **even** better place to live, work & visit

Why did we commission the work from RoSPA?

- » Increased number of water related incidents on stretch of river between Churchill Bridge and Windsor Bridge
- » Many possible land ownership interests in this stretch of river with no clear lead organisation

Who did RoSPA consult with?

- » B&NES Council; Avon Fire and Rescue; Avon and Somerset Police
- » Universities
- » Environment Agency; British Waterways
- » Victim's families
- » Other stakeholders e.g. Sainsbury's

Windsor Bridge

High Risk Level

Low Risk Level

Tolerable Risk Level

Low Risk Level

Churchill Bridge

Making Bath & North East Somerset an **even** better place to live, work & visit

Main recommendations (short-term):

- » Increase visibility of ladder 'cut outs'



Main recommendations (short-term)

- » Vegetation management plan
- » Appropriate signage
- » Awareness raising campaign
- » Feedback to Bath Western Riverside development
- » Maintenance of 'grab lines'

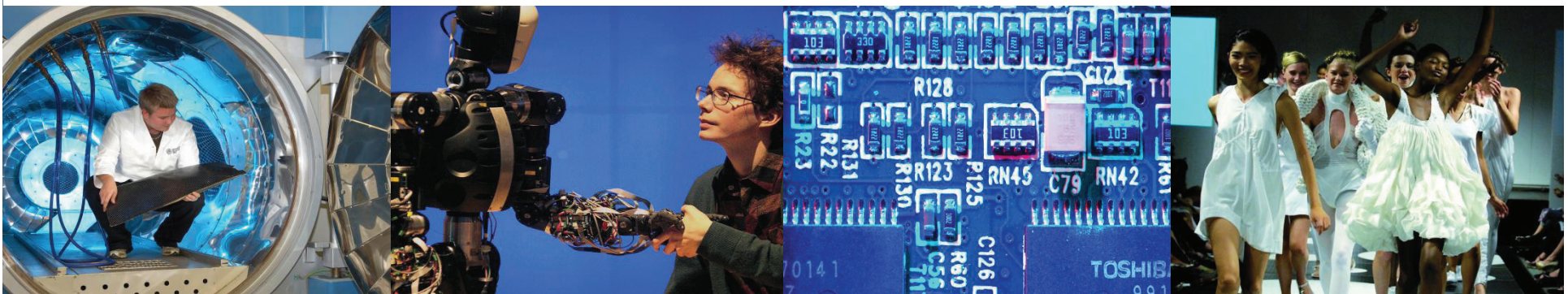
Main recommendations (longer-term)

- » Repair fences of areas adjacent to towpath
- » Consider edge protection in high risk area
- » Arrange for debris to be removed from the river regularly

Next steps....

- » Agree action plan with partners
- » Continue to work with Universities to keep raising awareness
- » Any questions?

Sustainable economic growth in Bath and North East Somerset

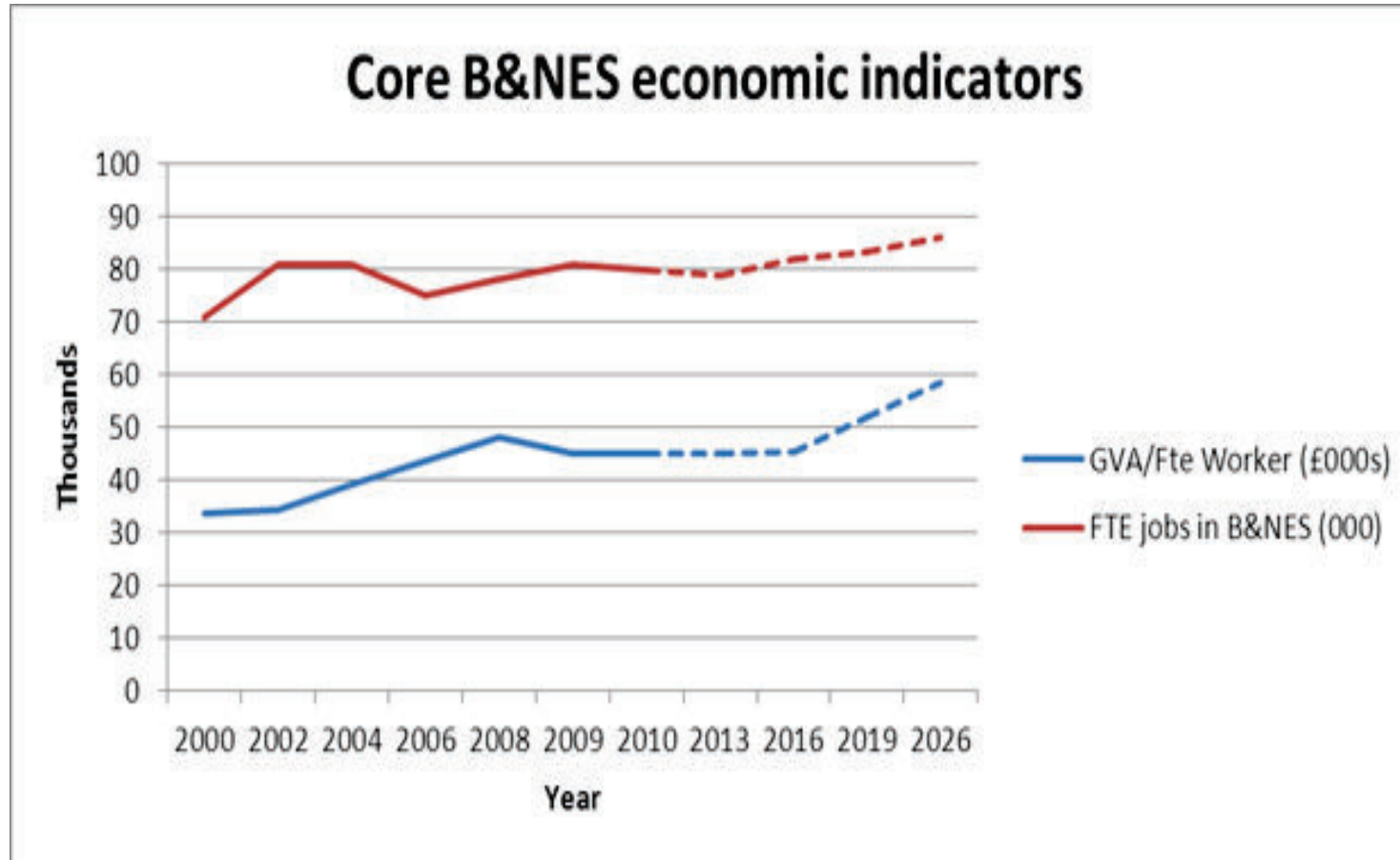




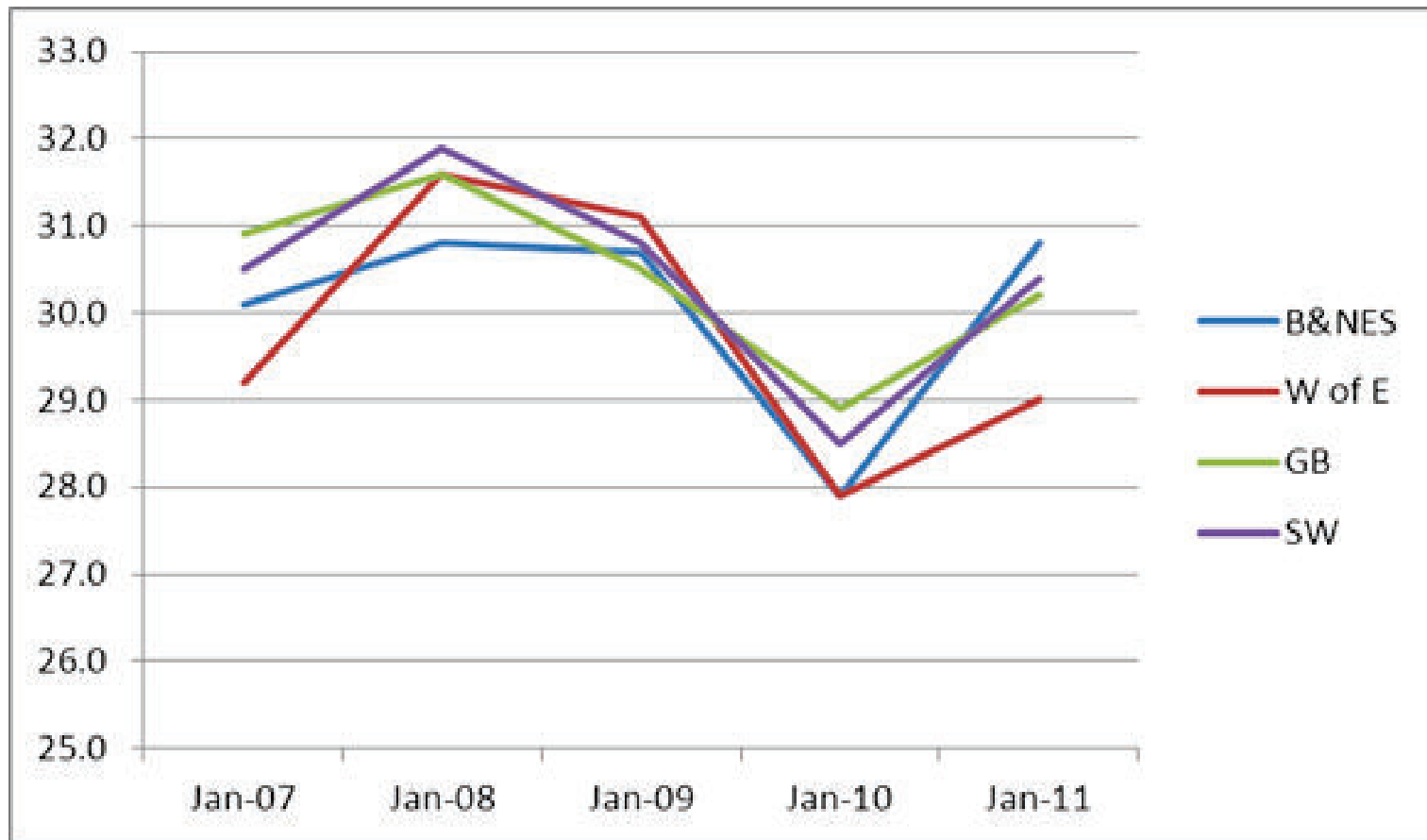
Economic Strategy Progress

Key measure	2010 benchmark	Current Status	2011 progress	2013 target
No of business births per year	695	↓	635	755
GVA per worker	£48,200	↓	£45,100	Increase of at least 0.5%
Employees across the District	78,000	↑	81,400	Net increase of at least 1%
Unemployment across District	2%	→	2.1%	Maintain levels
Proportion of knowledge based workers (NVQ 4)	35%	→	36%	Maintain or increase
% of knowledge based jobs	13%	↓	12%	At least 14%

Core economic indicators

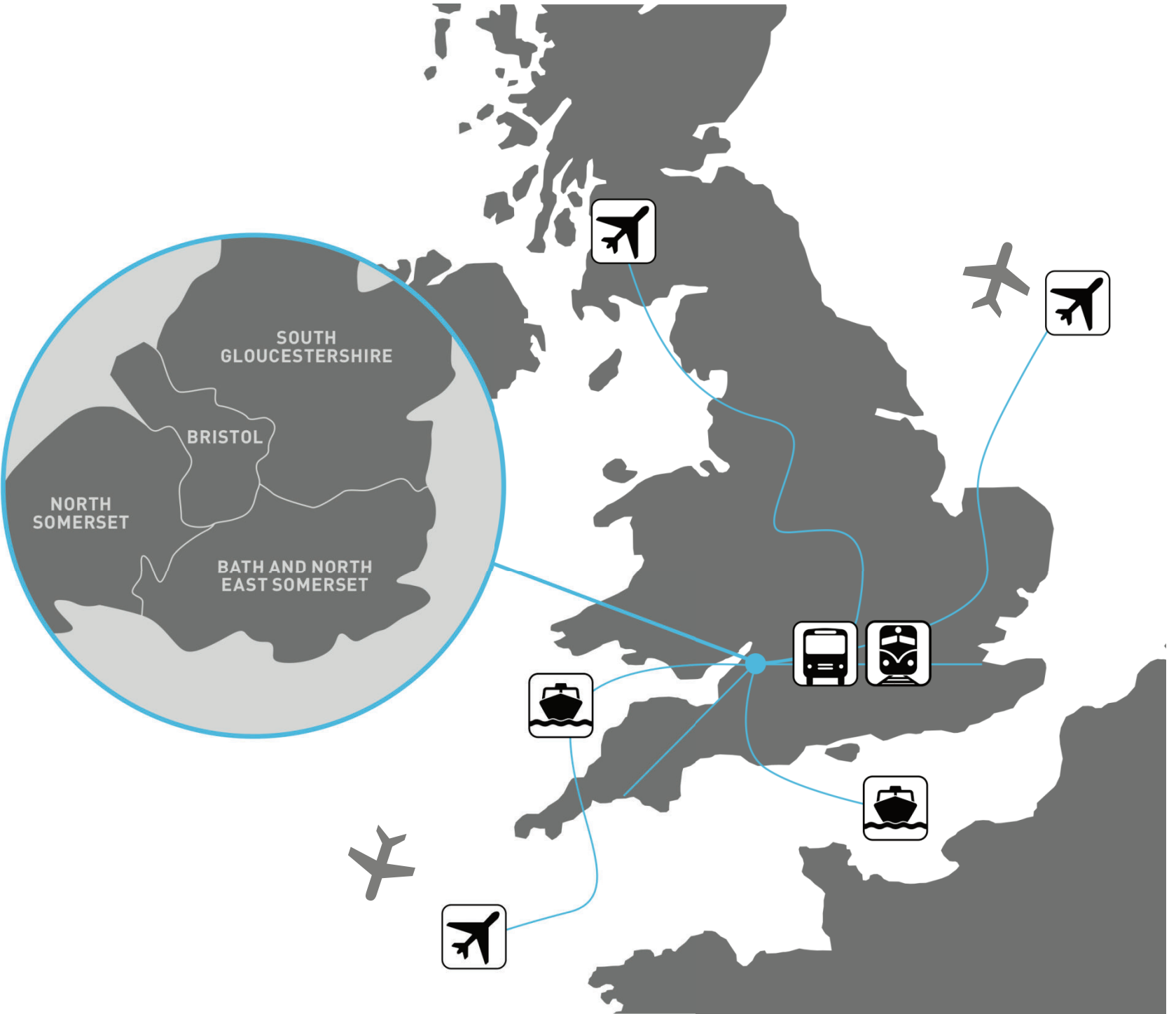


Emerging economic challenges: % of 18-24 year olds claiming JSA as proportion of total WAP

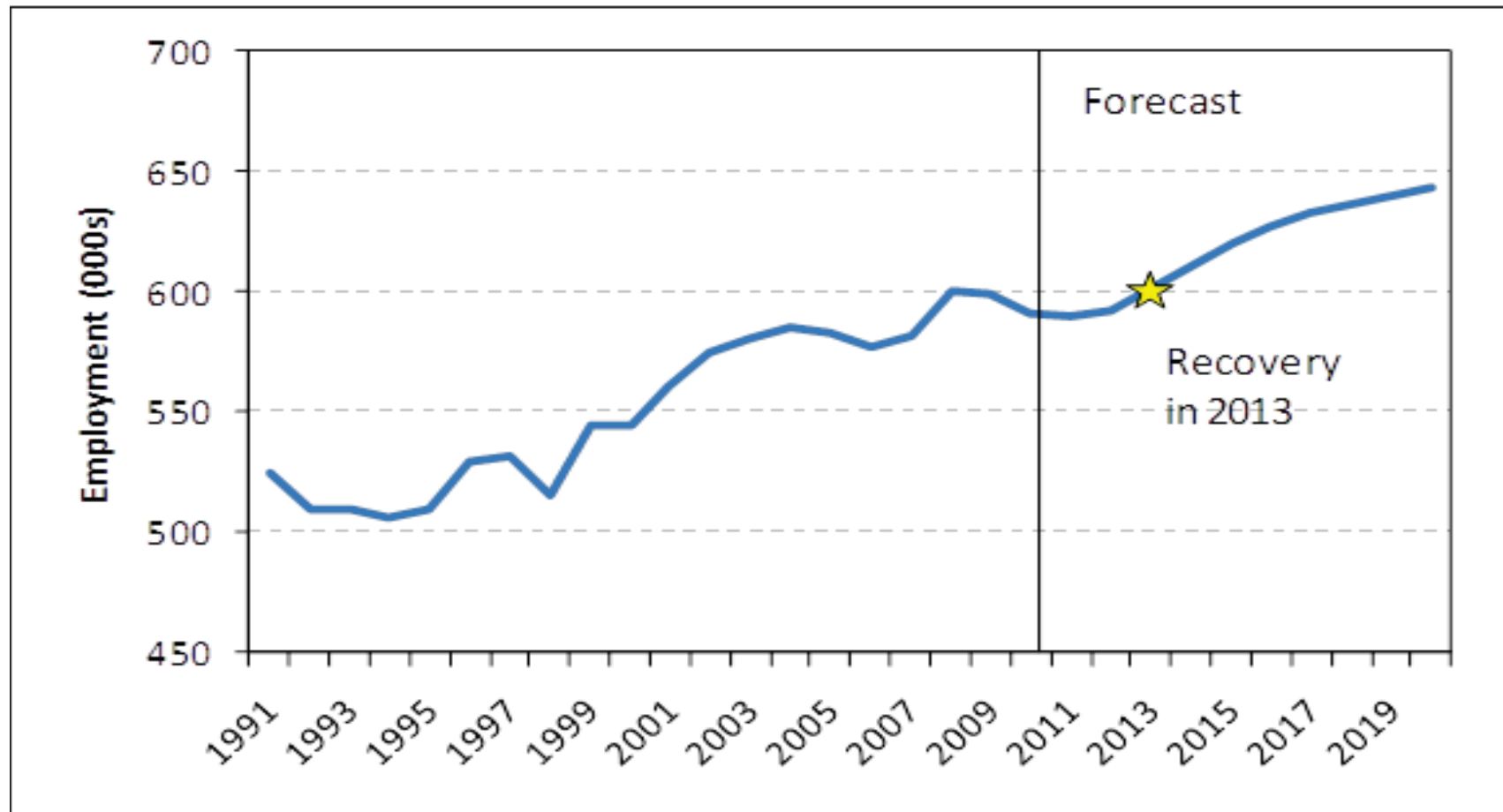


National policy changes

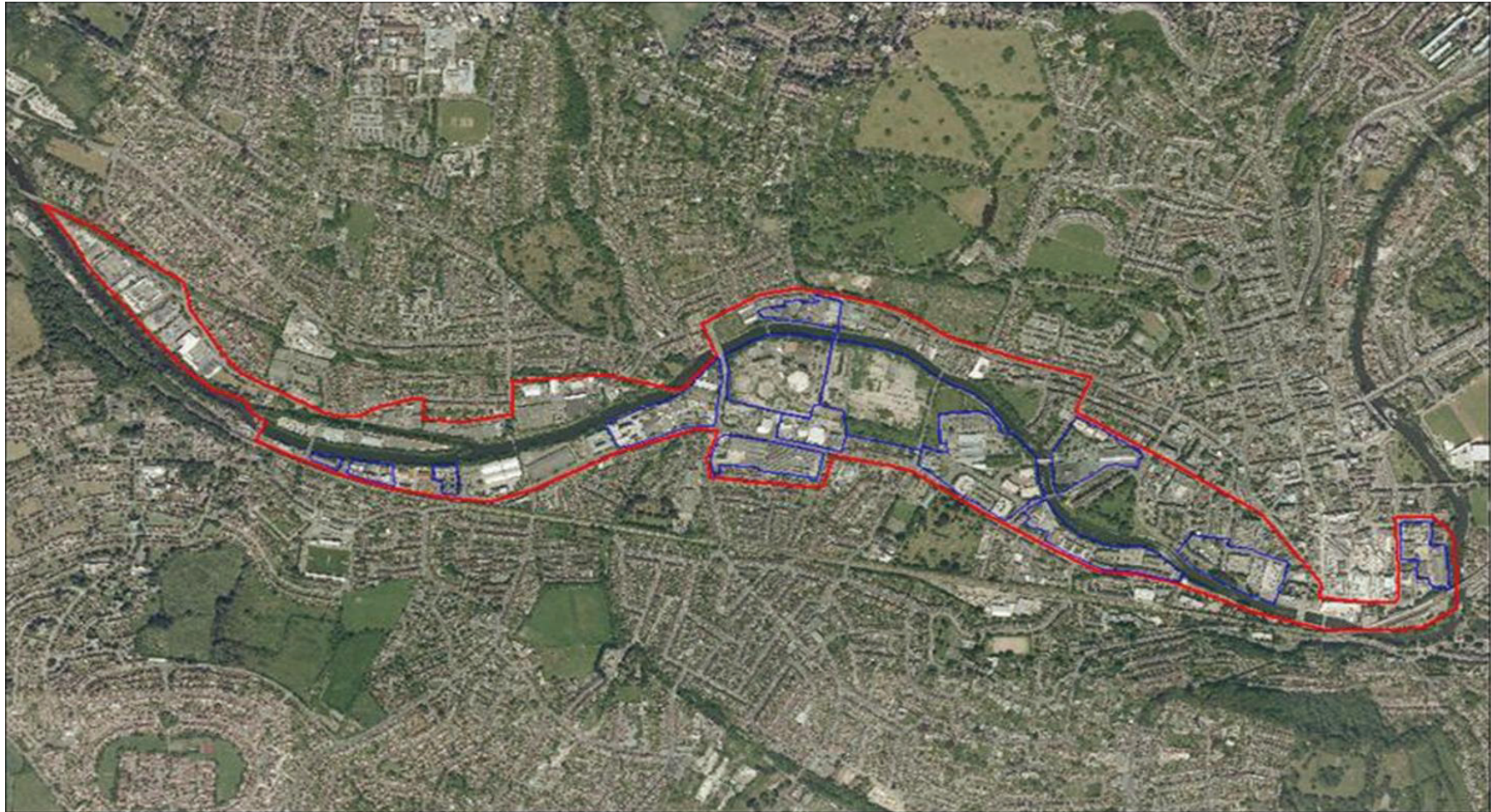
- Local Enterprise Partnerships
- Enterprise Zones and Areas
- Regional Business Link service ending
- Regional Growth Fund – bidding for cash
- Local Government Finance Review
- Work programme
- Localism Bill

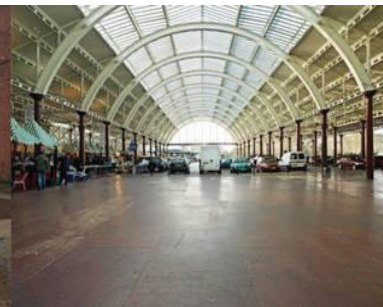
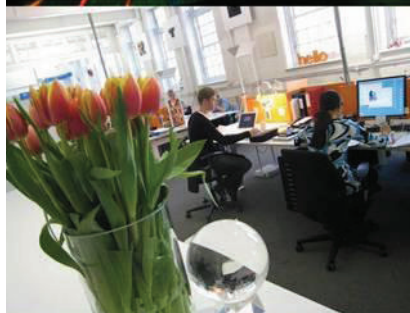
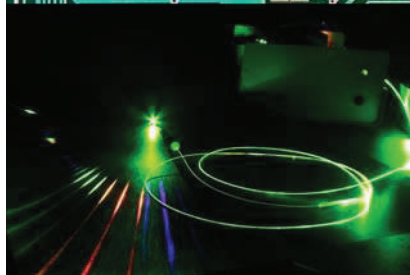
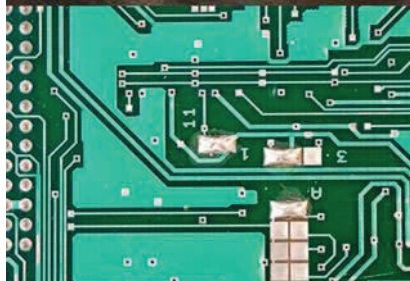


Potential for recovery: Employment West of England LEP, 1991 - 2020



Bath City Riverside 'City of Ideas' Enterprise Area





Bath City Riverside 'City of Ideas' Enterprise Area

Capacity:

Area:	95 hectares
Additional employment space:	180,000 m ²
Including office space:	128,000m ²

Potential to deliver (25 yrs):

New homes:	2,000
New businesses:	300
Increase in jobs:	9,300
Increase in GVA (35% increase):	£1.6billion
Business rates contribution:	£292million

New actions

- Re-invigorated actions on worklessness, business support, delivering regeneration schemes and promotion
- Active engagement with LEP
- Establish the Bath City Riverside 'City of Ideas' Enterprise Area
- Planning the Future; Financing the Future
- Re-launch the Economic Partnership

This page is intentionally left blank